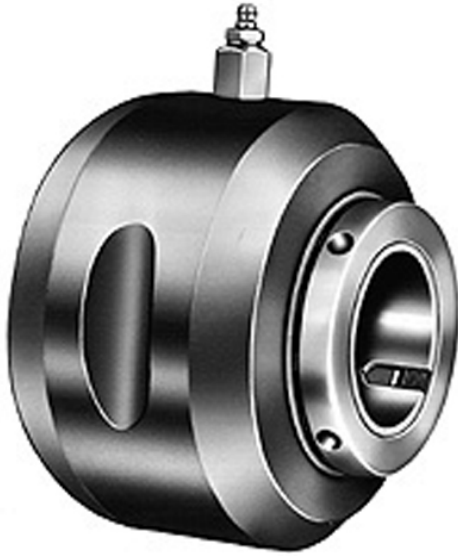




NTK BEARING CORP. OF CANADA LTD.



DUSD311 Bearing 2D drawings and 3D CAD models

Dodge DUSD311 Roller Insert Bearings

Bearing No. DUSD311

d	3.6875 in
radial dynamic load capacity:	5500 lb
D	9.7500 in
radial static load capacity:	5500 lb
outer ring width:	6-1/4 in
maximum rpm:	1250 RPM
inner ring width:	8-1/2 in
seal type:	Labyrinth
bearing type:	Taper Roller
finish/coating:	Uncoated
locking device:	Adapter Mount
manufacturer catalog number:	066466
bearing material:	Cast Iron